

United States of America
Department of Transportation -- Federal Aviation Administration
Supplemental Type Certificate

Number SA1219EA

This certificate issued to Sensenich Propeller Manufacturing Company, Inc.
14 Citation Lane
Lititz, PA 17543

certifies that the change in the type design for the following product with the limitations and conditions therefor as specified herein meets the airworthiness requirements of Part 21 of the Federal Aviation Regulations.

Original Product -- Type Certificate Number: *
Make: *
Model: *

*See attached FAA Approved Model List (AML) No. SA1219EA for list of approved airplane models and applicable airworthiness regulations.

Description of Type Design Change: Installation of a Sensenich Model 72CK56-0-56 -54 or -52 metal propeller and a S72CK spinner assembly in accordance with Sensenich Propeller Manufacturing Drawing C-2326, Revision J, dated July 10, 2003, and Sensenich Propeller Manufacturing Propeller Installation Instructions for S72CK56 Propeller dated January 12, 2004.

Limitations and Conditions:

- For aircraft S/N's up to and including 152-82031, the following propeller limits must be displayed in the cockpit:
 - Propeller Diameter not over 72 inches; not under 70 inches
 - Static RPM limits at maximum permissible throttle settings; not over 2275, not under 2100
 - Maximum RPM except takeoff and climb (FAA 36 cruise maximum continuous power limit) 2440 RPM
- For aircraft S/N's 152-82032 and above: FAA approved Sensenich Flight Manual Supplement No. 1, dated April 9, 2004, is required.
- If the holder agrees to permit another person to use this certificate to alter the product, the holder shall give the other person written permission of that permission.
- Compatibility of this design change with previously approved modifications must be determined by the installer.
- A copy of this certificate and the FAA Approved Model List (AML) No. SA1219EA, issued January 20, 1981, or later FAA approved revisions, must be maintained as part of the permanent records for the modified aircraft.

This certificate and the supporting data which is the basis for approval shall remain in effect until surrendered, suspended, revoked or a termination date is otherwise established by the Administrator of the Federal Aviation Administration.

Date of application: March 18, 1980

Date reissued: August 28, 1989, May 22, 1995,
April 9, 2003, May 5, 2003, April 30, 2004

Date of issuance: January 20, 1981

Date amended: April 09, 2004

Federal Aviation Administration



By direction of the Administrator

Vito A. Pulera
(Signature)

Vito A. Pulera
Manager
New York Aircraft Certification Office

(Title)

INSTRUCTIONS: The transfer endorsement below may be used to notify the appropriate FAA Regional Office of the transfer of the Supplemental Type Certificate.

The FAA will reissue the certificate in the name of the transferee and forward it to him.

TRANSFER ENDORSEMENT

Transfer the ownership of Supplemental Type Certificate Number _____

to *(Name of transferee)* _____

(Address of transferee) _____

(Number and street)

(City, State, and ZIP code)

from *(Name of grantor)(Print or type):* _____

(Address of grantor): _____

(Number & street)

(City, State, and ZIP code)

Extent of Authority (if licensing agreement): _____

Date of Transfer: _____

Signature of grantor *(In Ink)*: _____

SENSENICH PROPELLER MANUFACTURING COMPANY, INC.

AREA CODE 717
PHONE - 569-0435
FAX - 560-3725



14 CITATION LANE
LITITZ, PA
17543

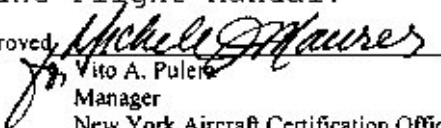
SUPPLEMENT NO.1
To Cessna 152 FAA
Approved Flight Manual
FOR
Sensenich 72CK56-0-52 through 56 Metal Propeller and S72CK
Spinner Assembly

Reg. No. _____

Serial No. _____

This supplement is applicable to Cessna Model 152 aircraft with serial numbers 152-82032 and above. It must be attached to the FAA Approved Airplane Flight Manual dated July 1, 1978 when the Sensenich 72CK56-0-52 through 56 metal propeller and 72CK spinner (assembly) is installed in accordance with STC SA1219EA dated January 20, 1981.

This supplement contains the limitations and operating procedures, both normal and emergency, for the Sensenich S72CK56-0-52 through 56 metal propeller and S72CK spinner assembly installation when operating in accordance with this supplement. These limitations and procedures are in addition to, or in place of those contained in the basic FAA Approved Airplane Flight Manual.

FAA Approved 
Vito A. Pulera
Manager
New York Aircraft Certification Office
Federal Aviation Administration

Date APR - 9 2004

Visit Our Web Site at <http://www.sensenich.com>

SUPPLEMENT NO.1
To Cessna 152 FAA
Approved Flight Manual
FOR

Sensenich 72CK56-0-52 through 56 Metal Propeller and S72CK
Spinner Assembly

I Limitations:

Propeller: Sensenich Model 72CK56-0-52 through 56

Diameter: Not over 72 in.; not under 70 in.

Static RPM limits at maximum permissible throttle setting-
not over 2275; not under 2100.

Engine Limits: Take off power 2550 RPM.

FAR 36 Noise Certification Maximum continuous power 2440 RPM

II Procedures - No change.

III Emergency Procedures - No change.

IV Performance - Performance is equivalent to an unmodified
Model 152

FAA Approved

Date APR -9 2004

SUPPLEMENT NO.1
To Cessna 152 FAA
Approved Flight Manual
FOR
Sensenich 72CK56-0-52 through 56 Metal Propeller and S72CK
Spinner Assembly

LOG OF REVISIONS

• Revised Pages

<u>Rev</u> <u>No.</u>	<u>Pages</u> <u>No.</u>	<u>Date</u>	<u>Description</u>	<u>Approved</u>
A	1,2,3	1/12/04	Updated format, Added 52" Pitch	

FAA Approved

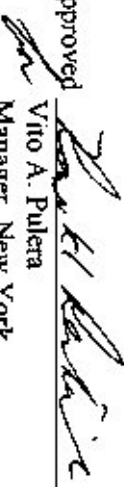
Date APR - 9 2004

Visit Our Web Site at <http://www.sensenich.com>

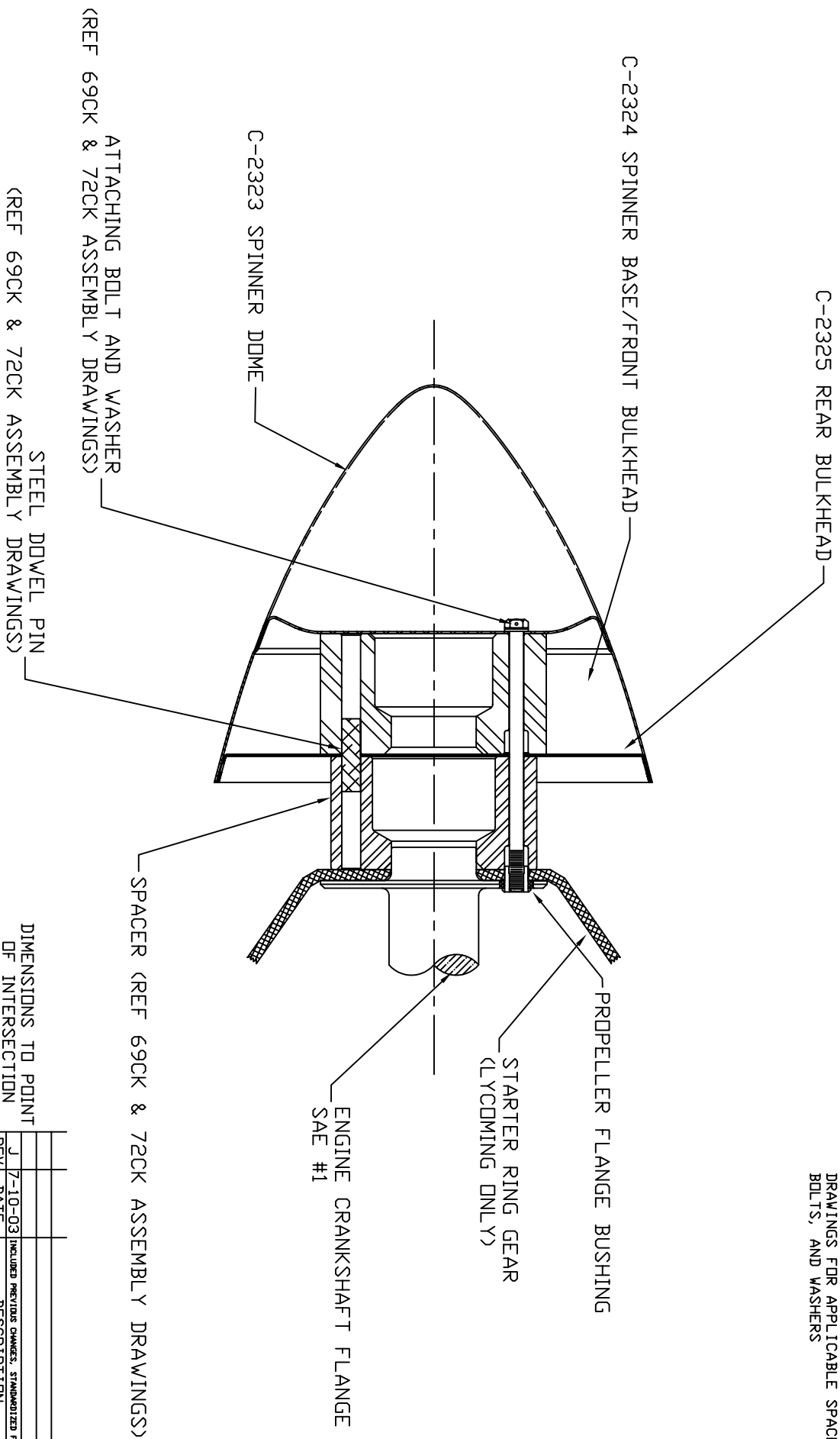
FAA APPROVED MODEL LIST (AML) NO. SA1219EA
Sensenich Propeller Manufacturing Company, Inc.
 INSTALLATION OF Model 72CK56-0-56, -54 and -52 Metal Propellers

Original Issue Date
 April 09, 2004
 Revision 1, Dec. 1, 2004

Item	Aircraft Make	Model	Certification Basis	Installation Instructions	ATM Supplement Number/Date	Equipment
1	Cessna	152	T.C. 3A19 / CAR 3	Sensenich Propeller Manufacturing Co. Installation Instructions for S72CK56 Propeller dated January 12, 2004 and Sensenich Propeller Manufacturing Co. Installation Drawing C-2326 Revision J dated August 10, 2003.	Supplement No. 1, dated April 09, 2004	N/A
2	Cessna	A152	T.C. 3A19 / CAR 3	Sensenich Propeller Manufacturing Co. Installation Instructions for S72CK56 Propeller dated January 12, 2004 and Sensenich Propeller Manufacturing Co. Installation Drawing C-2326 Revision J dated August 10, 2003.	Supplement No. 1, dated April 09, 2004	N/A
3	Reims Aviation	F152	T.C. A13EU / CAR 3	Sensenich Propeller Manufacturing Co. Installation Instructions for S72CK56 Propeller dated January 12, 2004 and Sensenich Propeller Manufacturing Co. Installation Drawing C-2326 Revision J dated August 10, 2003.	Supplement No. 1, dated April 09, 2004	N/A
4	Reims Aviation	FA152	T.C. A13EU / CAR 3	Sensenich Propeller Manufacturing Co. Installation Instructions for S72CK56 Propeller dated January 12, 2004 and Sensenich Propeller Manufacturing Co. Installation Drawing C-2326 Revision J dated August 10, 2003.	Supplement No. 1, dated April 09, 2004	N/A

FAA Approved

 Vito A. Pulera
 Manager, New York
 Aircraft Certification Office

SPINNER ASSEMBLY
CROSS-SECTION VIEW



- NOTES:
1. UNLESS OTHERWISE SPECIFIED) DOME ATTACHES TO FRONT BULKHEAD USING 6 AN526C1032R8 (OR EQUIV.) PAN HEAD SCREWS AND 6 A1020 (OR EQUIV.) FIBER WASHERS
 2. FRONT BULKHEAD ATTACHES TO REAR BULKHEAD USING 10 AN526C1032R8 (OR EQUIV.) PAN HEAD SCREWS AND 10 A1020 (OR EQUIV.) FIBER WASHERS
 3. REFERENCE 69CK & 72CK ASSEMBLY DRAWINGS FOR APPLICABLE SPACERS, BOLTS, AND WASHERS

DIMENSIONS TO POINT OF INTERSECTION

TOLERANCES UNLESS OTHERWISE NOTED

- 1 DEC +0.020
- 2 DEC +0.015
- 3 DEC +0.010
- 4 DEC +0.005
- ANGLES ± 1 DEG.

MAT'L	6061 ALUM PER COR-A-250/113	TITLE	SENSENICH PROPELLER MFG. CO. INC.
STOCK	-	DESIGN	69CK & 72CK SPINNER ASSEMBLY
HEAT TR.	T6 PER MIL-H-6088	SCALE	1/2
FINISH	ALUMINUM PER SP-116 OR MIL-B-13	DWG. NO.	C-2326
DESIGN	-	APP'D	[Signature]
DRAWN	K.S. SCHULTZ	DATE	7-10-03



**PROPELLER INSTALLATION INSTRUCTIONS
FOR SENSENICH S72CK56 PROPELLER
ON CESSNA 152/REIMS AVIATION CESSNA 152 AIRCRAFT**

- I) Remove Cessna spinner assembly, Sensenich or McCauley Propeller and mounting bolts per instructions in 152 Maintenance Manuals.

Original attaching bolts and spinner can be used to install Sensenich Propeller, provided original propeller was a Sensenich 72CK56.

II) **INSTALLATION OF 72CK56 PROPELLER:**

- a) Install propeller, spacer assembly, rear spinner bulkhead, on engine flange as per included drawing #C-2326 Rev J.
- b) Position front spinner, and insert propeller attaching bolts(6 each AN6H-55AS bolts and AN960-616 washers (furnished).
- c) Tighten propeller attaching bolts (280 to 300 in-lb.). Install 0.040 inch diameter stainless steel safety wire (not furnished).
- d) Install spinner dome.

III) **WEIGHT AND BALANCE:**

- a) Revision of the aircraft weight and balance is not necessary if replacing a Sensenich Propeller. If replacing a McCauley fixed pitch propeller, the weight and balanced must be changed. The Sensenich 72CK weighs 28.4 lbs at an arm of -36.5 inches.

IV) **FLIGHT MANUAL SUPPLEMENT:**

For all aircraft models the following propeller limits must be displayed in the cockpit:

- 1) Propeller Diameter not over 72 inches; not under 70 inches

- 2) Static RPM limits at maximum permissible throttle settings; not over 2275, not under 2100
- 3) Maximum RPM except takeoff and climb (FAR 36 cruise maximum continuous power limit) 2440 RPM

For aircraft S/N's 152-82032 and above: FAA approved Sensenich Flight Manual Supplement must be installed in aircraft when the above alteration is made. Fill out a 377 form for the alteration and make all necessary changes to the aircraft records.

72CK56 INSTALLATION
Cessna 152/Reims Aviation
Cessna 152
CJS 1/12/04