

SENENICH WOOD PROPELLER CO., INC.

AREA CODE 813
PHONE - 752-3711
FAX - 752-2818



2008 WOOD COURT
PLANT CITY, FL USA
33563

See us on the Web @ www.sensenich.com

SSI-SP-202201

Sensenich Supplemental Instructions for 12 Inch Cub Composite Spinners

These instructions are to help with the spinner assembly during a propeller installation, they do not replace propeller installation instructions.

Table 1: Spinner Bill of Materials

Item	Description
1	Spacer (if applicable)
2	AN525-832R8
3	Rear Spinner Bulkhead

Item	Description
4	Hub Mount Half
5	Hub Cover Half
6	Spinner Dome

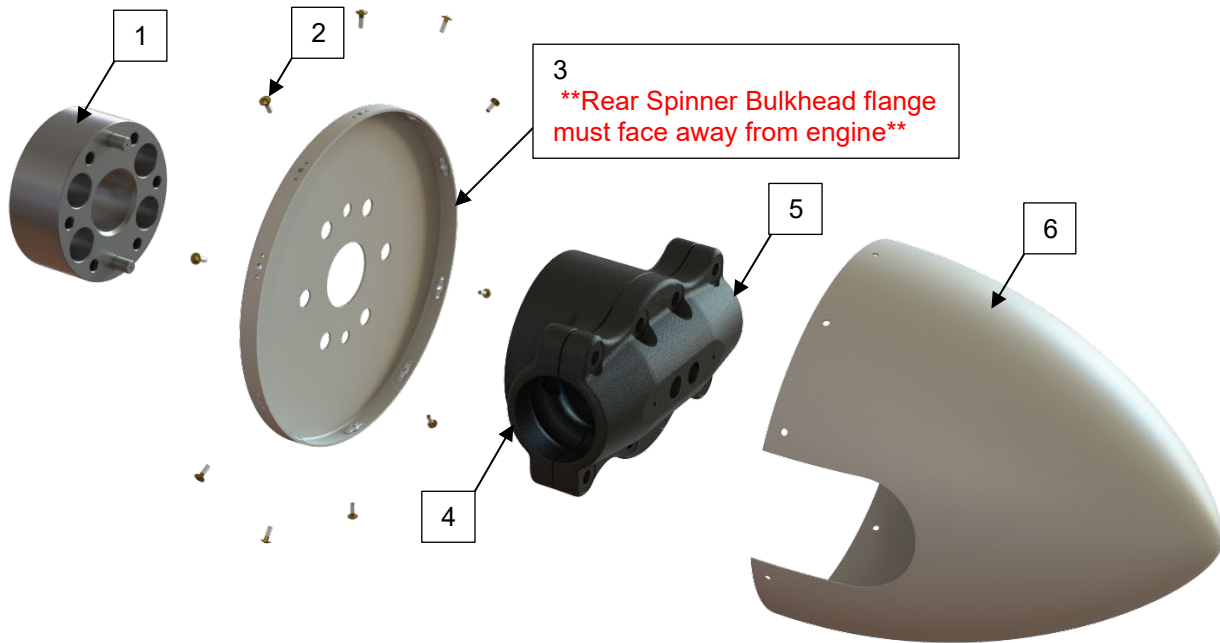


Figure 1: Spinner Assembly

(Note: Blades and hub mounting hardware not shown for simplicity)

SPINNER INSTALLATION

1. Place spacer (if required), rear spinner bulkhead and the hub mount, as shown in **Figure 1**, on the propeller mounting flange. The hub must sit flush on the mounting flange. The flange on the rear spinner bulkhead must face away from the engine as shown in **Figure 2**.
2. Slide spinner dome over the rear spinner bulkhead. A small amount of force should be required to press the spinner dome all the way down onto the rear spinner bulkhead to line up the bolt holes.
3. Fasten the spinner dome to the rear spinner bulkhead with the AN525-832R8 screws torqued to 15-20 in-lbs.

NOTE: Ensure there is adequate clearance between the spinner dome cutouts and the propeller blades and hub. Inadequate clearance may result in the spinner dome wearing into the blade or hub. The amount of clearance depends on engine type and spinner construction, but a minimum of 1/8" clearance is recommended.

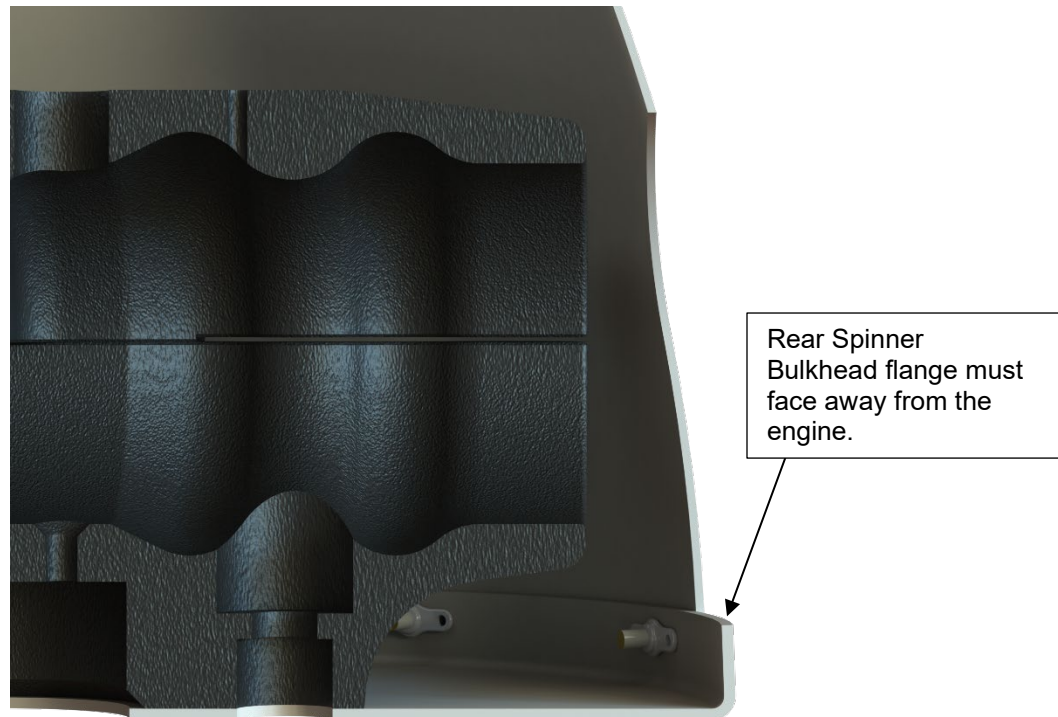


Figure 2: Rear Spinner Bulkhead Section View